



Innotec

www.innotec-uk.com

LEGAL SERVICES ARBITRATORS, MEDIATORS, EXPERTS

The Right People For The Right Job



No matter how competent they may be, judges, juries and non-specialist arbitrators cannot hope to have the technical insight and industry experience of experts that have spent their whole careers amassing knowledge about complex technologies such as electronics, microelectronics and software.

Knowledge of the law is simply not enough and often leads to protracted cases and questionable decisions. But there is an alternative.

For almost twenty years, Innotec has been

recognized for its skill in expert witness assignments that involve electronics and software. Innotec can now also provide qualified and experienced Arbitrators, Mediators and Expert Adjudicators. Our expertise has taken us around the world from courtrooms in the UK, Europe, USA and Hong Kong to international arbitration tribunals involving companies from around the world.

Innotec people have world-class industrial experience and academic credentials and further qualifications from the foremost organisations in Arbitration and Mediation. This means that Innotec can ensure that the professionals it assigns are up to date, commercially astute and fully qualified in the appropriate aspects of technology and the law.

We thrive on technical complexity and can quickly cut through the pseudo-science and sophistry often employed to confuse technical arguments.

To keep us on our toes, we are checked by and affiliated to the organizations in the panel on the right. With that pedigree, we see the next twenty years being just as successful as the last.

Chips With Everything

The interesting thing about electronics and software is that it gets into every aspect of life. Recent cases have involved us unravelling the intricacies of transport, consumer electronics, factory control, defence equipment, chip manufacturing, telecoms, digital TV and utilities in disputes ranging from sinking ships and exploding power stations through to the intricacies of intellectual property disputes over the inner workings of computer memory devices and microprocessors.



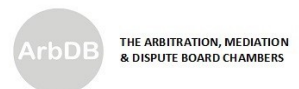
Chartered
Institute of
Arbitrators

CIArb

**THE
ACADEMY
OF
EXPERTS**



LCIA
Arbitration and ADR worldwide



IBET Business
Partners

Innotec Experts, Mediators & Arbitrators

Typical assignments for Innotec experts include:

- Appointments as sole arbitrator or as an arbitration tribunal panel member
- Producing expert reports and statements relating to complex technical issues
- Analysing complex software systems to ascertain if they meet their required level of performance
- Undertaking forensic engineering on behalf of clients
- Analysing systems and equipment to establish causes of failure
- Performing environmental tests to assess conformance with specifications of systems and equipment
- Analysing patents in support of Intellectual Property actions
- Providing advice on the formation of cases for clients in the early stages of potential litigation
- Providing deposition and courtroom testimony on behalf of clients

Electronics and software are pervasive technologies, appearing in a wide range of products, systems and applications. Here are just a few of the areas in which Innotec experts have provided expert witness services.

- | | | |
|---------------------------------------|--|---|
| • Airline booking systems | • HiFi technology & systems | • Quantitative trading software |
| • Airport vehicle tracking | • IC (chip) packaging | • Hedge fund trading software |
| • Amplifiers | • Defence electronics | • Renewable energy |
| • Audio Visual equipment | • Investigation of IED controllers | • Satellite TV |
| • Bank clearing systems | • Electronic counterfeiting | • Software security |
| • Refuse vehicle control systems | • Large electronic displays | • Industrial security equipment |
| • CCTV security systems | • External electronic advertising displays | • Semiconductor devices |
| • Commodity trading systems | • Aircraft systems/Avionics | • Smartcard systems |
| • Construction projects | • Manufacturing control systems | • Servers & IT systems |
| • CRM and accounting software systems | • Medical devices | • SIM chips & smartcards |
| • Design methodology | • Memory chips | • Software systems |
| • DRAM chips | • Microprocessor bus systems | • SONAR systems |
| • Electronic cigarettes | • Microprocessor hardware | • Sonobuoys |
| • Electrical installations | • Microprocessor software | • Railway trackside radio systems |
| • Electrical equipment | • Motion detectors | • Uninterruptable Power Supplies |
| • Electronic games | • Navigation equipment | • Utilities (gas, electricity, water) supplies & metering |
| • Electronic learning aids | • On-line gaming software | • Vending machines |
| • Emergency services radio systems | • Printed Circuit Boards | • Video codecs |
| • Factory control equipment | • Power station control software | • Welding equipment |
| • FAX machine identification | • Power switchgear | • Intruder detection systems |
| • Franking machines | • Pressure sensors | • Mathematical software |
| • Utility Metering | • Printers | • Industry analysis |
| | • Maritime communications | |

Innotec Reviews Lockerbie Evidence

Innotec was instructed to review the electronic evidence recovered from the scene of the Lockerbie air disaster in preparation for the proposed appeal.

Fragments of electronic timing and detonation circuits were recovered in Scotland and form a key part of the evidence in this high-profile case. Innotec has performed extensive analysis of the electronic circuits and

the manufacturing techniques used in order to help ascertain the source of the electronic components alleged to have been used to fabricate the explosive device.

It is a great tribute to the skill of Innotec's experts to be chosen for such a significant piece of forensic engineering. Innotec experts have also given evidence in other anti-terrorist cases in the UK Courts.



Example Assignments

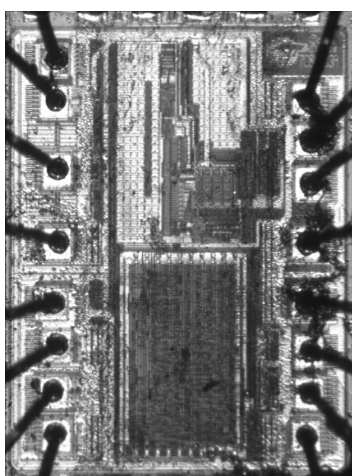
Millions Of Lines Of Code

When major software products and systems contain millions of lines of complex code, looking for copied intellectual property or checking for compliance with a specification can be difficult. Few people would know where to start looking.

Innotec has developed bespoke software tools to help in this analysis and has performed such work on systems as diverse as hedge-fund automatic trading systems, business management systems, CRM and accountancy systems, industrial control systems, banking systems and even in the machine code embedded in microcontrollers in domestic and industrial products.



Counterfeiting Of Electronic Products



Counterfeiting of electronic components and products has become a major problem for the industry and for major brands. For a few hundred dollars, unscrupulous companies can easily suck the program from supposedly secure microcontrollers and produce cheap, often dangerous copies of well known products. The internet provides an ideal marketplace for the counterfeit devices.

Innotec has recently been involved in a number of cases where it was necessary to tear-down electronic products, right down to analysing the inner workings of integrated circuits and embedded software, so as to show that copying and intellectual property theft had taken place.

In some cases this was by rogue companies in the Far East, but sometimes it was much closer to home, by ex-employees wishing to set up in competition with their former employers. Precise technical evidence was key in bringing successful outcomes in these cases.

Electronics On The Rocks

When the container ship Safmarin Agulhas was lost after running aground in an accident in South Africa, Innotec consultants were able to analyse the remains of the vessel's electronic engine control system to determine why the engines had failed.

By close analysis of both the electronics and software, we were able to discover the reason for the incident and give evidence for the series of international maritime arbitrations and litigation that followed the incident.

Just another example of the ubiquitous nature of electronics and software and another successful assignment for Innotec.

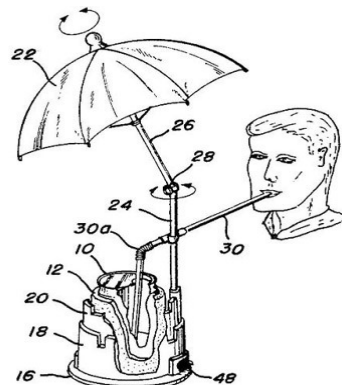


Innotec Expertise Used In Major Intellectual Property Cases

Complex Intellectual Property cases are bread and butter to Innotec consultants. We have recently been involved in cases at the International Trade Commission in Washington DC for Tessera regarding semiconductor packaging and in the Californian courts in cases for Hynix and other memory manufacturers in computer memory devices (DRAM) involving Rambus. Back in the UK we have worked on

Intellectual Property cases in applications as diverse as HiFi systems, computer games, security electronics, microprocessors, bus systems and industrial welding equipment.

Once again, if there is electronics or software in it, we can help companies and law firms formulate their cases and present them in a logical, understandable way.





Some of the law firms that Innotec experts have worked with

- | | | |
|-----------------------------------|-------------------------------------|----------------------------------|
| • Addlestone Keane | • Government of Pakistan (in-house) | • Pinsent Masons |
| • Allen and Overy | • HGF | • Quinn Emanuel |
| • Anglian Water (in-house) | • Hewitsons | • Sanderson Lumber |
| • ArbDB Chambers | • Hill Dickinson | • Simmons & Simmons |
| • Armitage Sykes | • Hogan Lovells | • Slaughter and May |
| • Arnold & Porter | • Howrey | • SLS |
| • ASB Law | • HPLC | • Smith Chamberlain |
| • Aston Morton Slack | • Imtiaz Siddiqui & Associates | • Squire Sanders |
| • Beachcroft Wansboroughs | • IDRS | • Stephenson Harwood |
| • Brachers | • Intel and Wilmer Hale | • Stockholm Chamber of Commerce |
| • Bristows | • Irell and Manella | • Taylor & Kelly |
| • Browne Jacobson | • Kennedy's | • Thelen |
| • Bufete Marroquin | • Marks & Clerk | • Townsend and Townsend and Crew |
| • Clifford Chance | • McCormicks | • Transco (in-house) |
| • Crown Prosecution Service | • McLure Naismith | • Trowers and Hamlins |
| • Cunningham Lindsey | • Metropololitan Police | • Turner Parkinson |
| • DAC Beachcroft | • MFB | • Venner Shipley |
| • DLA Piper | • Mills & Reeve | • Watson Farley & Williams |
| • Eversheds | • Morgan Russell | • Weightmans |
| • Ford & Warren | • Norton Rose Fulbright | • Weil Gotshal & Manges |
| • Freshfields Bruckhouse Deringer | • O'Melveny & Myers | • Wragge & Co |
| • Gibson Dunn and Crutcher | • Origin | |
| • Goodwin Proctor | • Orrick Herrington & Sutcliffe | |
| • Gosschalks | • Owen White Solicitors | |
| | • Pakistan Navy (in-house) | |



Innotec

www.innotec-uk.com

info@innotec-uk.com

Sales & Operations +44 (0)1 799 586 168

London Chambers +44 (0)2 035 149 020